

Stedi**FLEX**

PRODUCT CATALOGUE

EMPOWER STABLE FLEXIBILITY

Stedi**FLEX**

PRODUCT CATALOGUE

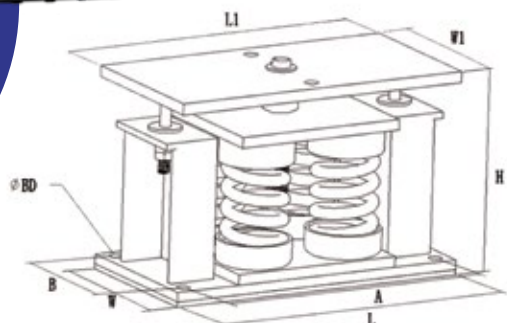
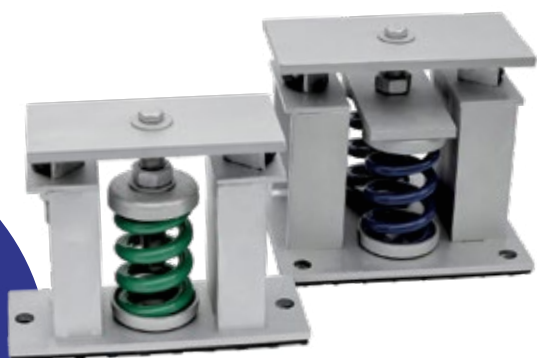
EMPOWER STABLE FLEXIBILITY



Table of Content

SFR Restrained Spring Mounts	01
SFRA Restrained Spring Mounts	07
SFF Free Standing Spring Mounts	09
SFH Hanger Mounts	15
SFH Rubber Hanger Mounts	17
SFP Rubber Isolator Mounts	18
SFDR Rubber Isolator Mounts	18
SFIB Inertia Shockproof Bases	19
Double Ribbed Rubber Pad	20

SFR Restrained SPRING MOUNTS



CHARACTERISTICS

- The spring is designed with low natural frequency value and is treated with ED and paint.
- Springs are heat treated and stress elimination treatment, long service life.
- The body is treated with Dacro rust prevention.
- Bottom anti - slip and anti - shock bolt design, high safety.
- The installation is simple and the height and level can be adjusted according to the actual need.

APPLICATION

- All kinds of heavy machinery.
- Water Chilling Units , cooling water tower.
- Fire pump and exhaust fan.
- Generator, air compressor.
- Dry transformer, oil immersed transformer



Compression Test



1000 Hours Neutral Salt Spray Test

SPEC	Dimensions (mm)								Fixing bolt
	L	W	L1	W1	A	B	H	ΦBD	
SFR-A1	260	100	210	100	230	0	195	16	M12
SFR-A2	235	220	235	120	195	180	200	16	
SFR-A4	320	165	320	165	290	135	200	14	
SFR-A6	400	170	400	170	370	140	200	18	
SFR-A9	420	250	420	250	384	214	200	18	
SFR-B1	280	100	250	100	250	0	225	16	
SFR-B2	250	230	250	120	200	180	235	16	
SFR-B4	350	230	350	230	300	180	235	16	
SFR-B6	450	230	450	230	400	180	235	18	
SFR-B9	450	320	450	320	400	270	235	18	
SFR-C1	310	230	310	230	260	180	290	18	
SFR-C2	330	280	320	280	270	230	305	18	
SFR-C4	440	310	440	310	390	260	305	18	
SFR-D1	370	260	370	200	320	210	390	20	
SFR-D2	390	420	390	350	340	370	390	20	
SFR-D4	610	400	610	340	560	350	390	20	
SFR-E1	370	260	370	200	320	210	430	20	
SFR-E2	390	420	390	350	340	370	430	20	
SFR-E4	610	400	610	340	560	350	430	20	

SFR-A-25MM

Model	Rated Capacity	Spring Rate	Rated Deflection	Color Code
	Kg	Kg/mm	mm	
SFR-A1-100	100	4.0	25	Yellow
SFR-A1-200	200	8.0	25	Green
SFR-A1-300	300	12.0	25	Red
SFR-A1-400	400	16.0	25	Blue
SFR-A1-500	500	20.0	25	Brown
SFR-A1-600	600	24.0	25	Gray
SFR-A1-700	700	28.0	25	White
SFR-A1-850	850	34.0	25	Khaki
SFR-A1-1000	1000	40.0	25	Blackish Green
SFR-A2-800	800	32.0	25	Blue
SFR-A2-1000	1000	40.0	25	Brown
SFR-A2-1200	1200	48.0	25	Gray
SFR-A2-1400	1400	56.0	25	White
SFR-A2-1700	1700	68.0	25	Khaki
SFR-A2-2000	2000	80.0	25	Blackish Green
SFR-A4-1200	1200	48.0	25	Red
SFR-A4-1600	1600	64.0	25	Blue
SFR-A4-2000	2000	80.0	25	Brown
SFR-A4-2400	2400	96.0	25	Gray
SFR-A4-2800	2800	112.0	25	White
SFR-A4-3400	3400	136.0	25	Khaki
SFR-A4-4000	4000	160.0	25	Blackish Green
SFR-A6-3600	3600	144.0	25	Gray
SFR-A6-4200	4200	168.0	25	White
SFR-A6-5100	5100	204.0	25	Khaki
SFR-A6-6000	6000	240.0	25	Blackish Green
SFR-A9-5400	5400	216.0	25	Gray
SFR-A9-6300	6300	252.0	25	White
SFR-A9-7500	7500	300.0	25	Khaki
SFR-A9-9000	9000	360.0	25	Blackish Green

SFR-B-50MM

Model	Rated Capacity	Spring Rate	Rated Deflection	Color Code
	Kg	Kg/mm	mm	
SFR-B1-100	100	2.0	50	Yellow
SFR-B1-200	200	4.0	50	Green
SFR-B1-300	300	6.0	50	Red
SFR-B1-400	400	8.0	50	Blue
SFR-B1-500	500	10.0	50	Brown
SFR-B1-600	600	12.0	50	Gray
SFR-B1-700	700	14.0	50	White
SFR-B1-850	850	17.0	50	Khaki
SFR-B1-1000	1000	20.0	50	Blackish Green
SFR-B2-800	800	16.0	50	Blue
SFR-B2-1000	1000	20.0	50	Brown
SFR-B2-1200	1200	24.0	50	Gray
SFR-B2-1400	1400	28.0	50	White
SFR-B2-1700	1700	34.0	50	Khaki
SFR-B2-2000	2000	40.0	50	Blackish Green
SFR-B4-1200	1200	24.0	50	Red
SFR-B4-1600	1600	32.0	50	Blue
SFR-B4-2000	2000	40.0	50	Brown
SFR-B4-2400	2400	48.0	50	Gray
SFR-B4-2800	2800	56.0	50	White
SFR-B4-3400	3400	68.0	50	Khaki
SFR-B4-4000	4000	80.0	50	Blackish Green
SFR-B6-3600	3600	72.0	50	Gray
SFR-B6-4200	4200	84.0	50	White
SFR-B6-5100	5100	102.0	50	Khaki
SFR-B6-6000	6000	120.0	50	Blackish Green
SFR-B9-5400	5400	108.0	50	Gray
SFR-B9-6300	6300	126.0	50	White
SFR-B9-7500	7500	150.0	50	Khaki
SFR-B9-9000	9000	180.0	50	Blackish Green

SFR-C-75MM

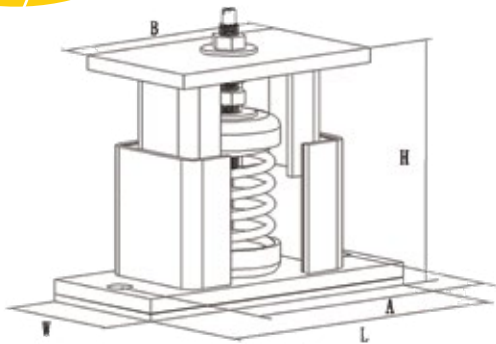
Model	Rated Capacity	Spring Rate	Rated Deflection	Color Code
	Kg	Kg/mm	mm	
SFR-C1-1000	100	1.3	75	Yellow
SFR-C1-200	200	2.7	75	Green
SFR-C1-300	300	4.0	75	Red
SFR-C1-400	400	5.3	75	Blue
SFR-C1-500	500	6.7	75	Brown
SFR-C1-600	600	8.0	75	Gray
SFR-C1-700	700	9.3	75	White
SFR-C1-850	850	11.3	75	Khaki
SFR-C1-1000	1000	13.3	75	Blackish Green
SFR-C2-800	800	10.7	75	Blue
SFR-C2-1000	1000	13.3	75	Brown
SFR-C2-1200	1200	16.0	75	Gray
SFR-C2-1400	1400	18.7	75	White
SFR-C2-1700	1700	22.7	75	Khaki
SFR-C2-2000	2000	26.7	75	Blackish Green
SFR-C4-1200	1200	16.0	75	Red
SFR-C4-1600	1600	21.3	75	Blue
SFR-C4-2000	2000	26.7	75	Brown
SFR-C4-2400	2400	32.0	75	Gray
SFR-C4-2800	2800	37.3	75	White
SFR-C4-3400	3400	45.3	75	Khaki
SFR-C4-4000	4000	53.3	75	Blackish Green

SFR-D-100MM

Model	Rated Capacity	Spring Rate	Rated Deflection	Color Code
	Kg	Kg/mm	mm	
SFR-D1-100	100	1.0	100	Yellow
SFR-D1-200	200	2.0	100	Green
SFR-D1-300	300	3.0	100	Red
SFR-D1-400	400	4.0	100	Blue
SFR-D1-500	500	5.0	100	Brown
SFR-D1-600	600	6.0	100	Gray
SFR-D1-700	700	7.0	100	White
SFR-D1-850	850	8.5	100	Khaki
SFR-D1-1000	1000	10.0	100	Blackish Green
SFR-D2-800	800	8.0	100	Blue
SFR-D2-1000	1000	10.0	100	Brown
SFR-D2-1200	1200	12.0	100	Gray
SFR-D2-1400	1400	14.0	100	White
SFR-D2-1700	1700	17.0	100	Khaki
SFR-D2-2000	2000	20.0	100	Blackish Green
SFR-D4-1200	1200	12.0	100	Red
SFR-D4-1600	1600	16.0	100	Blue
SFR-D4-2000	2000	20.0	100	Brown
SFR-D4-2400	2400	24.0	100	Gray
SFR-D4-2800	2800	28.0	100	White
SFR-D4-3400	3400	34.0	100	Khaki
SFR-D4-4000	4000	40.0	100	Blackish Green

SFR-E-125MM

Model	Rated Capacity	Spring Rate	Rated Deflection	Color Code
	Kg	Kg/mm	mm	
SFR-E1-100	100	0.8	125	Yellow
SFR-E1-200	200	1.6	125	Green
SFR-E1-300	300	2.4	125	Red
SFR-E1-400	400	3.2	125	Blue
SFR-E1-500	500	4	125	Brown
SFR-E1-600	600	4.8	125	Gray
SFR-E1-700	700	5.6	125	White
SFR-E1-850	850	6.8	125	Khaki
SFR-E1-1000	1000	8	125	Blackish Green
SFR-E2-800	800	6.4	125	Blue
SFR-E2-1000	1000	8	125	Brown
SFR-E2-1200	1200	9.6	125	Gray
SFR-E2-1400	1400	11.2	125	White
SFR-E2-1700	1700	13.6	125	Khaki
SFR-E2-2000	2000	16	125	Blackish Green
SFR-E4-1200	1200	9.6	125	Red
SFR-E4-1600	1600	12.8	125	Blue
SFR-E4-2000	2000	16	125	Brown
SFR-E4-2400	2400	19.2	125	Gray
SFR-E4-2800	2800	22.4	125	White
SFR-E4-3400	3400	27.2	125	Khaki
SFR-E4-4000	4000	32	125	Blackish Green



SFRA Restrained SPRING MOUNTS

CHARACTERISTICS

- The body material is nodular cast iron or Q235.
- Spherical cast iron body by hot dip galvanized or dacromet treatment, good weather resistance.
- Special structure design, the height can be adjusted according to the actual need.
- Light and sturdy appearance, easy installation; Suitable for all kinds of mechanical internal vibration isolation.
- The spring is treated by heat treatment, ED rust prevention, painting and other procedures.
- Load deflection of 25mm can effectively eliminate mechanical structure vibration.

APPLICATION

- Air conditioning, Exhaust fan, Windmill.
- Small Water Chilling Units, Pump.
- Generator set, General industrial machinery.



Compression Test

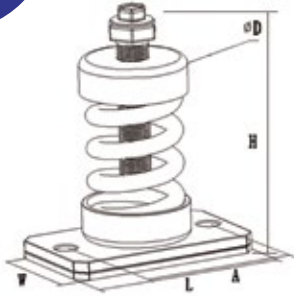


1000 Hours Neutral Salt Spray Test

SPEC	Dimensions (mm)						Bolt
	L	W	A	B	H		
SFRAS-A1	176	90	152	130	130	M10	
SFRAM-A1	186	110	162	140	180	M12	
SFRA-A2	225	185	160	220	190	M12	

SFRA-A-25MM

Model	Rated Capacity	Spring Rate	Rated Deflection	Color Code
	Kg	Kg/mm	mm	
SFRAS-A1-030	30	1.2	25	Green
SFRAS-A1-050	50	2.0	25	Red
SFRAS-A1-070	70	2.8	25	Blue
SFRAS-A1-090	90	3.6	25	Brown
SFRAS-A1-120	120	4.8	25	Gray
SFRAS-A1-150	150	6.0	25	White
SFRAS-A1-180	180	7.2	25	Orange
SFRAS-A1-250	250	10.0	25	Black
SFRAS-A1-350	350	14.0	25	Khaki
SFRAM-A1-100	100	4.0	25	Yellow
SFRAM-A1-200	200	8.0	25	Green
SFRAM-A1-300	300	12.0	25	Red
SFRAM-A1-400	400	16.0	25	Blue
SFRAM-A1-500	500	20.0	25	Brown
SFRAM-A1-600	600	24.0	25	Gray
SFRAM-A1-700	700	28.0	25	White
SFRAM-A1-850	850	34.0	25	Khaki
SFRAM-A1-1000	1000	40.0	25	Blackish Green
SFRA-A2-1000	1000	40.0	25	Brown
SFRA-A2-1200	1200	48.0	25	Gray
SFRA-A2-1400	1400	56.0	25	White
SFRA-A2-1700	1700	68.0	25	Khaki
SFRA-A2-2000	2000	80.0	25	Blackish Green



SFF Free Standing SPRING MOUNTS

CHARACTERISTICS

- MD type spring mounts spring cover and spring seat are weather resistant rubber or spherical cast iron, and hot dip galvanized treatment.
- Simple installation, adjustable bolts can be used to adjust the height and level as needed.

APPLICATION

- Water chilling unit, cooling water tower, pump, fire pump.
- Air conditioning, exhaust fan, generator set.



Compression Test



1000 Hours Neutral Salt Spray Test

SPEC	Dimensions (mm)								Fixing Bolt
	L	W	L1	W1	A	B	H	ΦBD	
SFF-A1	145	80	0	0	120	0	160	0	M12
SFF-A2	250	80	185	80	225	0	165	14	
SFF-A4	230	160	180	160	200	130	180	14	
SFF-B1	120	120	0	0	0	0	205	0	
SFF-B2	300	120	230	120	260	0	210	18	
SFF-B4	270	230	230	230	240	200	210	18	
SFF-C1	200	120	0	0	160	0	255	18	
SFF-C2	330	120	270	120	290	0	265	18	
SFF-C4	330	240	260	240	290	200	270	18	
SFF-D1	280	200	0	0	230	0	315	20	
SFF-D2	500	200	400	200	450	0	325	20	
SFF-D4	500	400	400	400	450	350	330	20	
SFF-E1	280	200	0	0	230	0	325	20	
SFF-E2	500	200	400	200	450	0	335	20	
SFF-E4	500	400	400	400	450	350	340	20	

SFF-A-25MM

Model	Rated Capacity	Spring Rate	Rated Deflection	Color Code
	Kg	Kg/mm	mm	
SFF-A1-100	100	4.0	25	Yellow
SFF-A1-200	200	8.0	25	Green
SFF-A1-300	300	12.0	25	Red
SFF-A1-400	400	16.0	25	Blue
SFF-A1-500	500	20.0	25	Brown
SFF-A1-600	600	24.0	25	Gray
SFF-A1-700	700	28.0	25	White
SFF-A1-850	850	34.0	25	Khaki
SFF-A1-1000	1000	40.0	25	Blackish Green
SFF-A2-800	800	32.0	25	Blue
SFF-A2-1000	1000	40.0	25	Brown
SFF-A2-1200	1200	48.0	25	Gray
SFF-A2-1400	1400	56.0	25	White
SFF-A2-1700	1700	68.0	25	Khaki
SFF-A2-2000	2000	80.0	25	Blackish Green
SFF-A4-1200	1200	48.0	25	Red
SFF-A4-1600	1600	64.0	25	Blue
SFF-A4-2000	2000	80.0	25	Brown
SFF-A4-2400	2400	96.0	25	Gray
SFF-A4-2800	2800	112.0	25	White
SFF-A4-3400	3400	136.0	25	Khaki
SFF-A4-4000	4000	169.0	25	Blackish Green

SFF-B-50MM

Model	Rated Capacity	Spring Rate	Rated Deflection	Color Code
	Kg	Kg/mm	mm	
SFF-B1-100	100	2.0	50	Yellow
SFF-B1-200	200	4.0	50	Green
SFF-B1-300	300	6.0	50	Red
SFF-B1-400	400	8.0	50	Blue
SFF-B1-500	500	10.0	50	Brown
SFF-B1-600	600	12.0	50	Gray
SFF-B1-700	700	14.0	50	White
SFF-B1-850	850	17.0	50	Khaki
SFF-B1-1000	1000	20.0	50	Blackish Green
SFF-B2-800	800	16.0	50	Blue
SFF-B2-1000	1000	20.0	50	Brown
SFF-B2-1200	1200	24.0	50	Gray
SFF-B2-1400	1400	28.0	50	White
SFF-B2-1700	1700	34.0	50	Khaki
SFF-B2-2000	2000	40.0	50	Blackish Green
SFF-B4-1200	1200	24.0	50	Red
SFF-B4-1600	1600	32.0	50	Blue
SFF-B4-2000	2000	40.0	50	Brown
SFF-B4-2400	2400	48.0	50	Gray
SFF-B4-2800	2800	56.0	50	White
SFF-B4-3400	3400	68.0	50	Khaki
SFF-B4-4000	4000	80.0	50	Blackish Green

SFF-C-75MM

Model	Rated Capacity	Spring Rate	Rated Deflection	Color Code
	Kg	Kg/mm	mm	
SFF-C1-100	100	1.3	75	Yellow
SFF-C1-200	200	2.7	75	Green
SFF-C1-300	300	4	75	Red
SFF-C1-400	400	5.3	75	Blue
SFF-C1-500	500	6.7	75	Brown
SFF-C1-600	600	8	75	Gray
SFF-C1-700	700	9.3	75	White
SFF-C1-850	850	11.3	75	Khaki
SFF-C1-1000	1000	13.3	75	Blackish Green
SFF-C2-800	800	10.7	75	Blue
SFF-C2-1000	1000	13.3	75	Brown
SFF-C2-1200	1200	16	75	Gray
SFF-C2-1400	1400	18.7	75	White
SFF-C2-1700	1700	22.7	75	Khaki
SFF-C2-2000	2000	26.7	75	Blackish Green
SFF-C4-1200	1200	16	75	Red
SFF-C4-1600	1600	21.3	75	Blue
SFF-C4-2000	2000	26.7	75	Brown
SFF-C4-2400	2400	32	75	Gray
SFF-C4-2800	2800	37.3	75	White
SFF-C4-3400	3400	45.3	75	Khaki
SFF-C4-4000	4000	53.3	75	Blackish Green

SFF-D-100MM

Model	Rated Capacity	Spring Rate	Rated Deflection	Color Code
	Kg	Kg/mm	mm	
SFF-D1-100	100	1.0	100	Yellow
SFF-D1-200	200	2.0	100	Green
SFF-D1-300	300	3.0	100	Red
SFF-D1-400	400	4.0	100	Blue
SFF-D1-500	500	5.0	100	Brown
SFF-D1-600	600	6.0	100	Gray
SFF-D1-700	700	7.0	100	White
SFF-D1-850	850	8.5	100	Khaki
SFF-D1-1000	1000	10.0	100	Blackish Green
SFF-D2-800	800	8.0	100	Blue
SFF-D2-1000	1000	10.0	100	Brown
SFF-D2-1200	1200	12.0	100	Gray
SFF-D2-1400	1400	14.0	100	White
SFF-D2-1700	1700	17.0	100	Khaki
SFF-D2-2000	2000	20.0	100	Blackish Green
SFF-D4-1200	1200	12.0	100	Red
SFF-D4-1600	1600	16.0	100	Blue
SFF-D4-2000	2000	20.0	100	Brown
SFF-D4-2400	2400	24.0	100	Gray
SFF-D4-2800	2800	28.0	100	White
SFF-D4-3400	3400	34.0	100	Khaki
SFF-D4-4000	4000	40.0	100	Blackish Green

SFF-E-125MM

Model	Rated Capacity	Spring Rate	Rated Deflection	Color Code
	Kg	Kg/mm	mm	
SFF-E1-100	100	0.8	125	Yellow
SFF-E1-200	200	1.6	125	Green
SFF-E1-300	300	2.4	125	Red
SFF-E1-400	400	3.2	125	Blue
SFF-E1-500	500	4	125	Brown
SFF-E1-600	600	4.8	125	Gray
SFF-E1-700	700	5.6	125	White
SFF-E1-850	850	6.8	125	Khaki
SFF-E1-1000	1000	8	125	Blackish Green
SFF-E2-800	800	6.4	125	Blue
SFF-E2-1000	1000	8	125	Brown
SFF-E2-1200	1200	9.6	125	Gray
SFF-E2-1400	1400	11.2	125	White
SFF-E2-1700	1700	13.6	125	Khaki
SFF-E2-2000	2000	16	125	Blackish Green
SFF-E4-1200	1200	9.6	125	Red
SFF-E4-1600	1600	12.8	125	Blue
SFF-E4-2000	2000	16	125	Brown
SFF-E4-2400	2400	19.2	125	Gray
SFF-E4-2800	2800	22.4	125	White
SFF-E4-3400	3400	27.2	125	Khaki
SFF-E4-4000	4000	32	125	Blackish Green

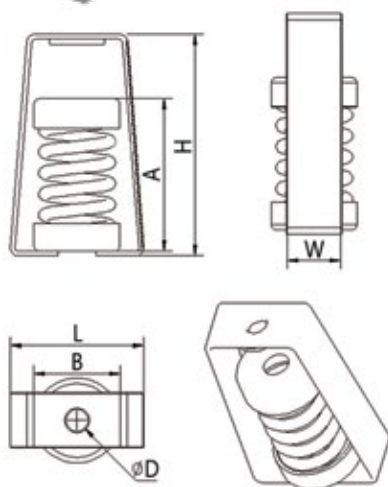
SFH Hanger MOUNTS

CHARACTERISTICS

- The outer frame is made of multi-layer anti-rust paint and tested by salt spraytest. The anti-rust effect is good.
- The bottom is anti-skid design.
- The spring is designed with low natural frequency.
- It can effectively isolate the low frequency noise caused by vibration.

APPLICATION

- Hanging air conditioning, exhaust fan.
- All types of air lifting pipe.
- All kinds of water pipe hanging pipe.
- All kinds of hanging HVAC equipment.



SPEC	Dimensions (mm)					
	L	W	A	B	H	ΦBD
SFHS-A1	55	25	60	37	80	11
SFHM-A1	85	40	90	55	150	16
SFHB-A1	120	50	130	77	200	16
SFHB-A2	220	100	125	220	280	28
SFHB-A4	220	200	125	220	280	28
SFHB-B1	140	65	160	95	230	16



Compression Test



1000 Hours Neutral Salt Spray Test

SFH-A&B-25&50MM

Model	Rated Capacity Kg	Spring Rate Kg/mm	Rated Deflection mm	Color Code
SFHS-A1-015	15	0.6	25	Green
SFHS-A1-025	25	1.0	25	Black
SFHM-A1-030	30	1.2	25	Green
SFHM-A1-050	50	2.0	25	Red
SFHM-A1-070	70	2.8	25	Blue
SFHM-A1-090	90	3.6	25	Brown
SFHM-A1-120	120	4.8	25	Gray
SFHM-A1-150	150	6.0	25	White
SFHM-A1-180	180	7.2	25	Orange
SFHM-A1-250	250	10.0	25	Black

Model	Rated Capacity	Spring Rate	Rated Deflection	Color Code
	Kg	Kg/mm	mm	
SFHM-A1-350	350	14.0	25	Khaki
SFHB-A1-100	100	4.0	25	Yellow
SFHB-A1-200	200	8.0	25	Green
SFHB-A1-300	300	12.0	25	Red
SFHB-A1-400	400	16.0	25	Blue
SFHB-A1-500	500	20.0	25	Brown
SFHB-A1-600	600	24.0	25	Gray
SFHB-A1-700	700	28.0	25	White
SFHB-A1-850	850	34.0	25	Khaki
SFHB-A1-1000	1000	40.0	25	Blackish Green
SFHB-A2-800	800	32.0	25	Blue
SFHB-A2-1000	1000	40.0	25	Brown
SFHB-A2-1200	1200	48.0	25	Gray
SFHB-A2-1400	1400	56.0	25	White
SFHB-A2-1700	1700	68.0	25	Khaki
SFHB-A2-2000	2000	80.0	25	Blackish Green
SFHB-A4-1200	1200	48.0	25	Red
SFHB-A4-1600	1600	64.0	25	Blue
SFHB-A4-2000	2000	80.0	25	Brown
SFHB-A4-2400	2400	96.0	25	Gray
SFHB-A4-2800	2800	112.0	25	White
SFHB-A4-3400	3400	136.0	25	Khaki
SFHB-A4-4000	4000	160.0	25	Blackish Green
SFHB-B1-100	100	2.0	50	Yellow
SFHB-B1-200	200	4.0	50	Green
SFHB-B1-300	300	6.0	50	Red
SFHB-B1-400	400	8.0	50	Blue
SFHB-B1-500	500	10.0	50	Brown
SFHB-B1-600	600	12.0	50	Gray
SFHB-B1-700	700	14.0	50	White
SFHB-B1-850	850	17.0	50	Khaki
SFHB-B1-1000	1000	20.0	50	Blackish Green



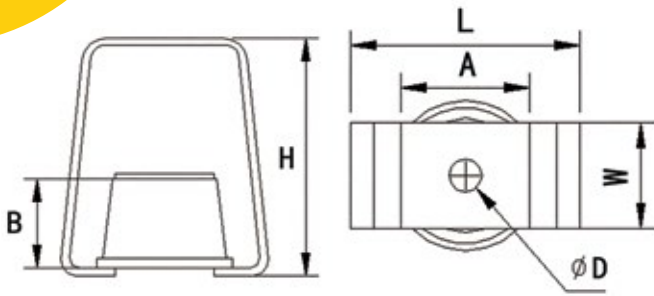
SFH Rubber HANGER MOUNTS

CHARACTERISTICS

- MD type spring mounts spring cover and spring seat are weather resistant rubber or spherical cast iron, and hot dip galvanized treatment.
- Simple installation, adjustable bolts can be used to adjust the height and level as needed.

APPLICATION

- Water chilling unit, cooling water tower, pump, fire pump.
- Air conditioning, exhaust fan, generator set.

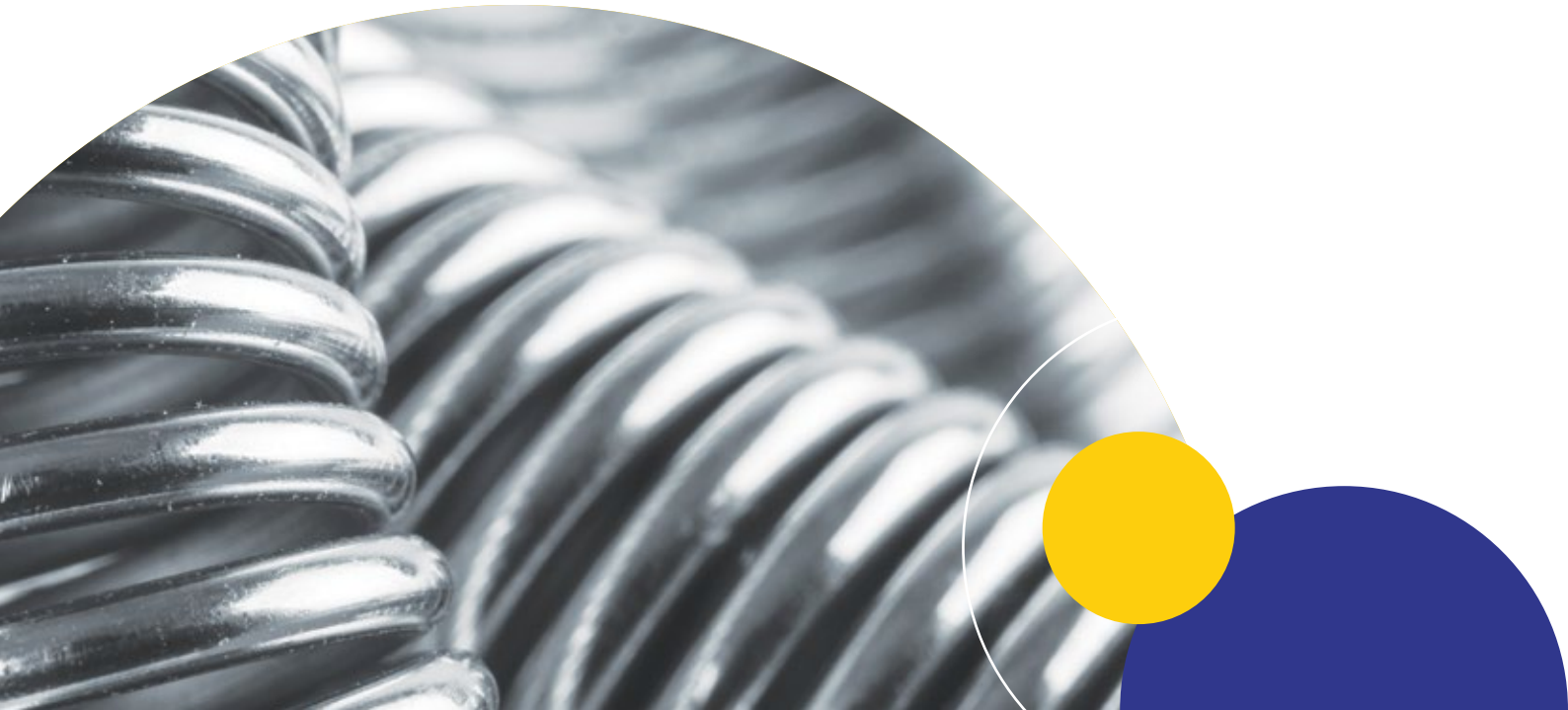


Compression Test



1000 Hours Neutral Salt Spray Test

Model	Rated Capacity (kg)	Hardness (Hs)	Compression height (mm)	Dimensions (mm)					
				A	B	L	H	W	Bolt
SFHR-100	25 - 100	45	3.5-7	60	30	85	95	40	Φ14
SFHR-200	160 - 200	60							
SFHR-300	250 - 310	70							





SFP Rubber ISOLATOR MOUNT

NATURAL FREQUENCY:

1. Axial 7HZ
2. Lateral 3-5HZ

PRODUCT ADVANTAGES:

1. For equipment with 1500rpm, the anti-vibration efficiency is greater than 90%
2. The height remains constant within the allowable load range.
3. Simple installation
4. The product underwent 400 hours of salt spray test.

APPLICATION

Exhaust fans, water pumps, air conditioning, air compressor, electric generator, all types of heavy machinery

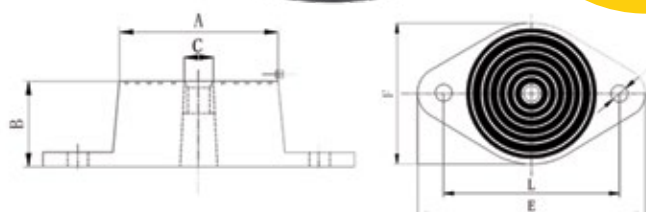


Compression Test

Model	Rubber Hardness	Maximum load	ΦA	B*	C	D	E	F	G	H	ΦI	J	N
SFP-W	40	150											
SFP-M	50	200	100	40	M10	124	10.2	152	16.2	104	68	3	10
SFP-H	60	250											

SFDR Rubber ISOLATOR MOUNT

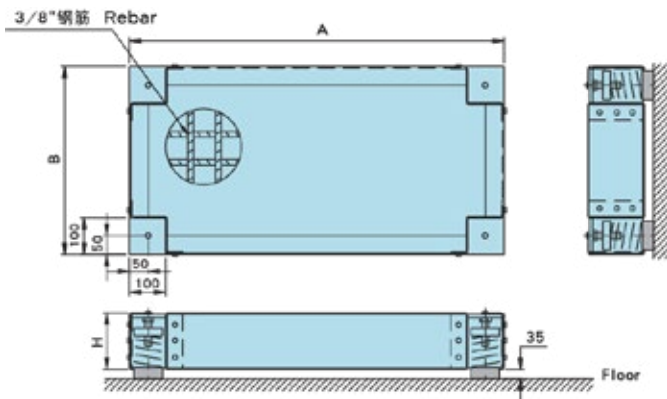
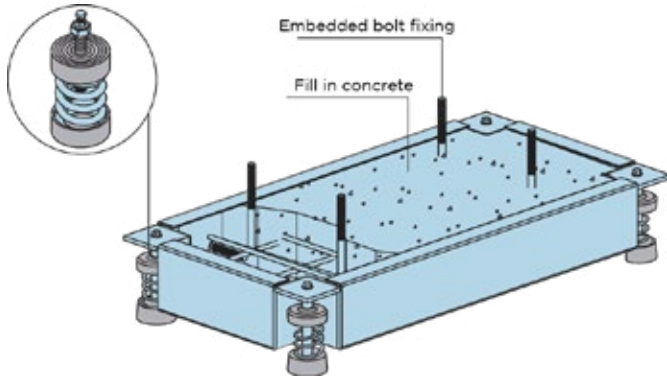
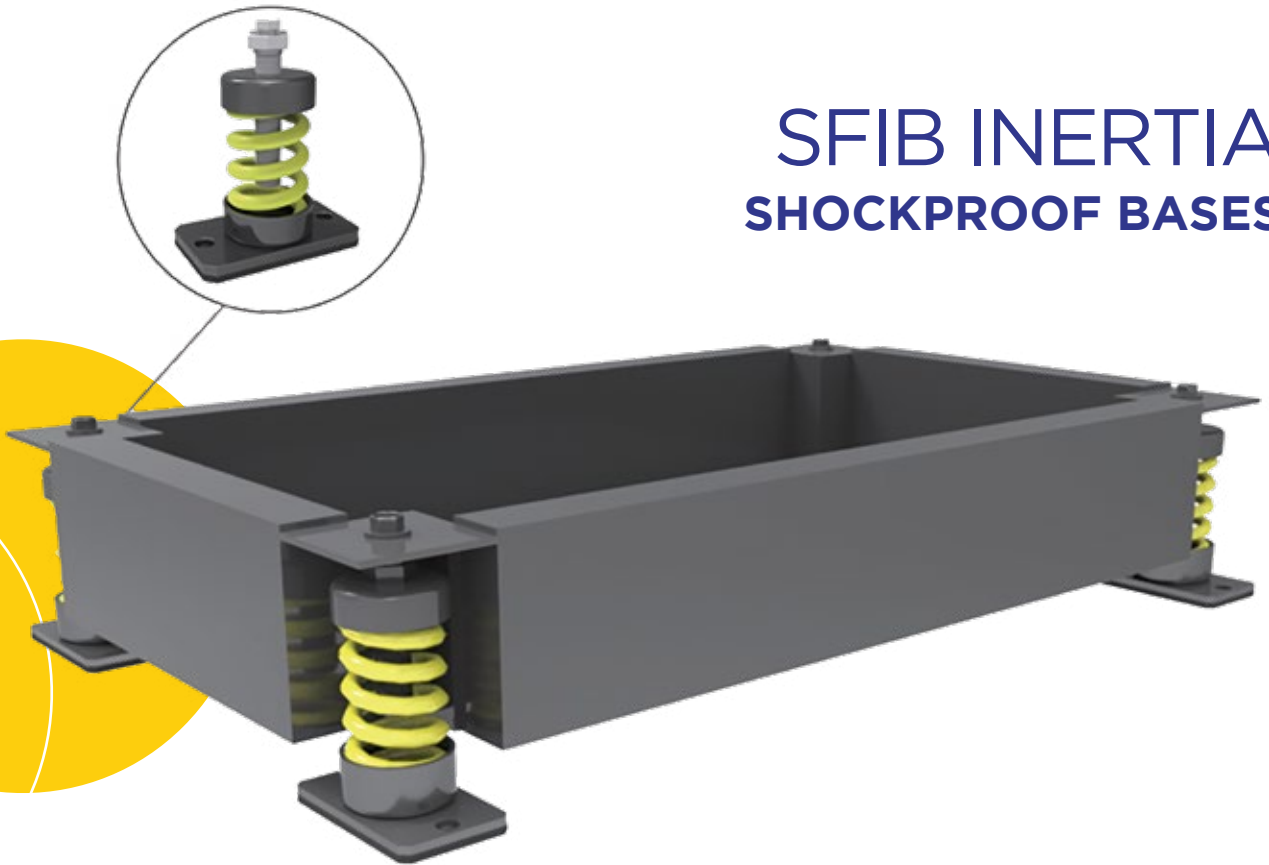
- Simple structure design, add metal parts to match, easy to install.
- Natural rubber provides relatively large static perturbations. Good damping effect at 15 Hz (900 RPM) vibration frequency-90% vibration reduction.
- Load capacity range from 12 kg to 1200 kg
- It can be used for: heating, ventilation and air conditioning equipment; pumps, fans, compressors, control cabinets.



Compression Test

Model	A	B	C	D	E	F	L	Maximum compression (mm)	Maximum load (kg)		
									40°	60°	75°
SFDR-1	30	38	M8	M8	81	41	60	4	12	25	30
SFDR-2	44	48	M10	M10	98	59	76	4	30	60	80
SFDR-3	60	71	M12	M10	143	86	105	6	70	120	180
SFDR-4	86	70	M10	M10	159	102	127	10	190	370	500
SFDR-5	108	60	M16	M12	212	132	165	10	400	800	1200

SFIB INERTIA SHOCKPROOF BASES



APPLICATION

- Pump isolation

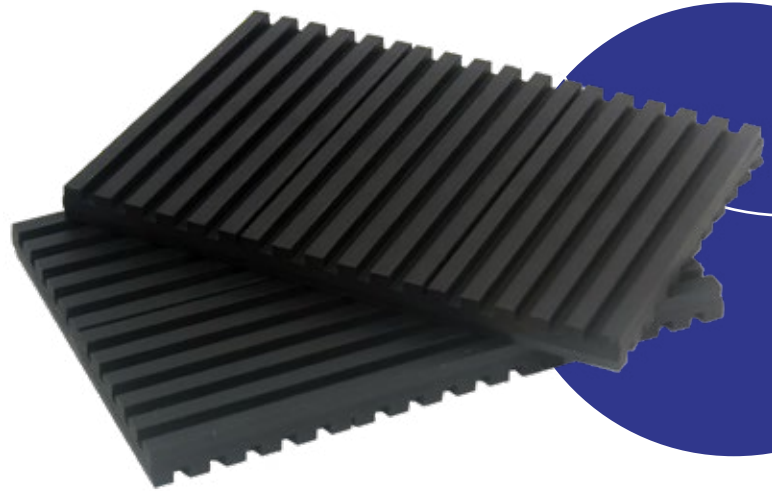
SURFACE TREATMENT

- Hot dip galvanizing

SPEC	Dimensions (mm)	
	H	
SFIB-1	80	
SFIB-2	100	
SFIB-3	120	
SFIB-4	160	
SFIB-5	200	

Remarks:
The length and width can be manufactured according to the size of the equipment

DOUBLE RIBBED Rubber Pad



The crossed double ribbed rubber pads are produced from a high quality rubber and are crossed double ribbed in one or more layers separated with steel shims.

Pads are 50 durometer, available with customized sizes or big sheet to cut as per application requirements for various loading.

The rubber pad is water resistant and has been designed to operate within the strain limits of the isolator and to provide long life expectancy. Oil resistant rubber is also available at request.

Steel shims are available with stainless steel or carbon steel sheet of various thickness 2-5mm.

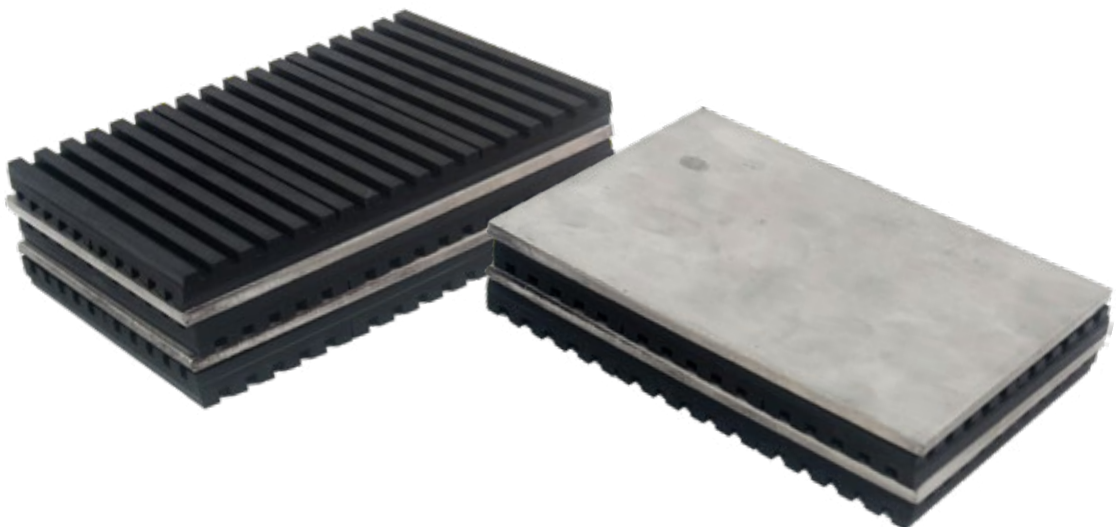
The pads can be used to isolate noise, shock, and high frequency vibration produced by mechanical, industrial, or process equipment located on grade or in other non-critical areas. The pads also can be used in outdoor unit of split air conditioning, treadmill, drum kit, subwoofer speaker, machinem, bottom of wooden floor, etc. domestic area.

MATERIALS

- Elastomer: natural rubber (standard), customizable for neoprene, EPDM, NBR, etc.
- Elastomer thickness: 10, 15, 20mm.
- Steel shim: carbon steel (standard), stainless steel, etc.

FEATURES

- Crossed double ribbed rubber pads.
- Combination ribbed pads and steel shims with customized layers.
- True elastomer-in-shear loading capacities from (4.2 or 8.4 kg/cm²).
- Static deflections up to 0.19" (5 mm).
- Corrosion resistant.
- Odorless and non-toxic.





DYNAMIC FLOW SYSTEM PTE LTD

Address
21 Bukit Batok Crescent
#14-74, Singapore 658065

Telephone
(65) 6481 4638

Email
enquiry@dynamicflow.com.sg